

ROAD TO DIRECTOR THE SEQUEL



THE SHIFT FROM CONSUMPTION TO PRODUCTION



IN THE PAST

LCs were placing personal orders of 1-3 products to consumer per month generating 40-120 CV.

NOW

LCs are placing personal orders of 1-3 products to consume and additional orders each month for inventory to sell in smaller quantities and generating 160-240+ CV per month.

DUPLICATING 10-5-2



**10 TO TRY
A ONE-WEEK SUPPLY**

25X Customers



**5 PREFERRED
CUSTOMERS**

Online Customers



**2 PERSONALLY
SPONSORED LCS**

Believers

1ST CYCLE



TEN 25X CUSTOMERS

\$250 Cash/Cash App



5 PREFERRED CUSTOMERS

**Minimum of \$100 Retail Commissions
Plus \$50 G5 Bonus**



2 PERSONALLY SPONSORED LCS

\$40 LC First Order Bonus

- \$250 25X Customers**
- \$100 Retail Commissions**
- \$ 50 G5 Bonus**
- \$ 40 LC First Order Bonus**
- \$ 50 10-5-2 Bonus**

Total \$490

*Earnings depicted are atypical and unique to each individual. Earning requires time and hard work and is not guaranteed. For more information about typical earnings, see our earnings disclosure statement (EDS).

INVESTING IN YOUR BUSINESS FOR PRODUCTION

Plus 3 FREE!



Example of Monthly Investment

INVESTMENT
EARNINGS
PROFIT



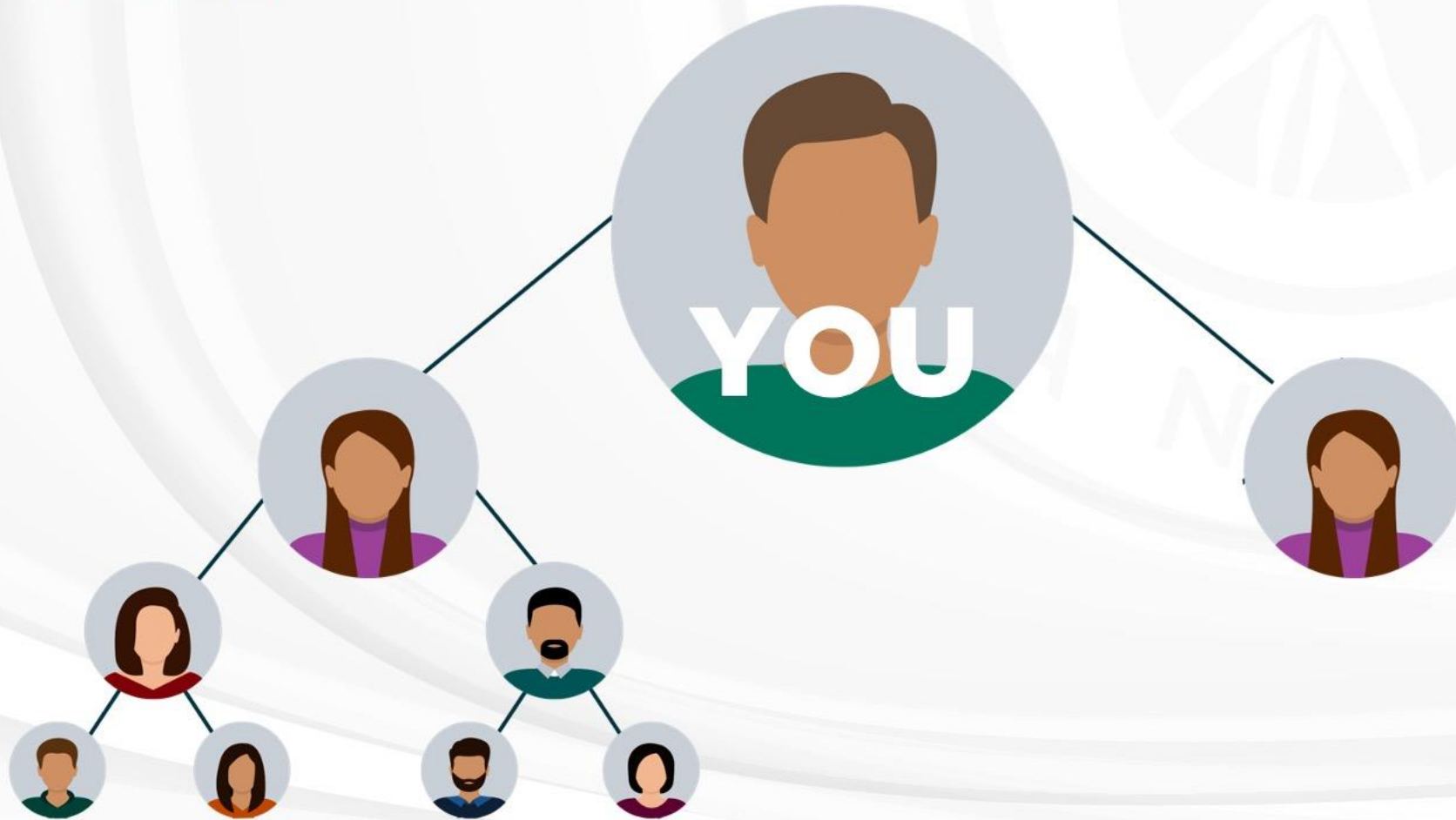
2nd Purchase to Sell

Total Investment	\$165
Total Earnings	\$490
Total Profit	\$325

2ND CYCLE



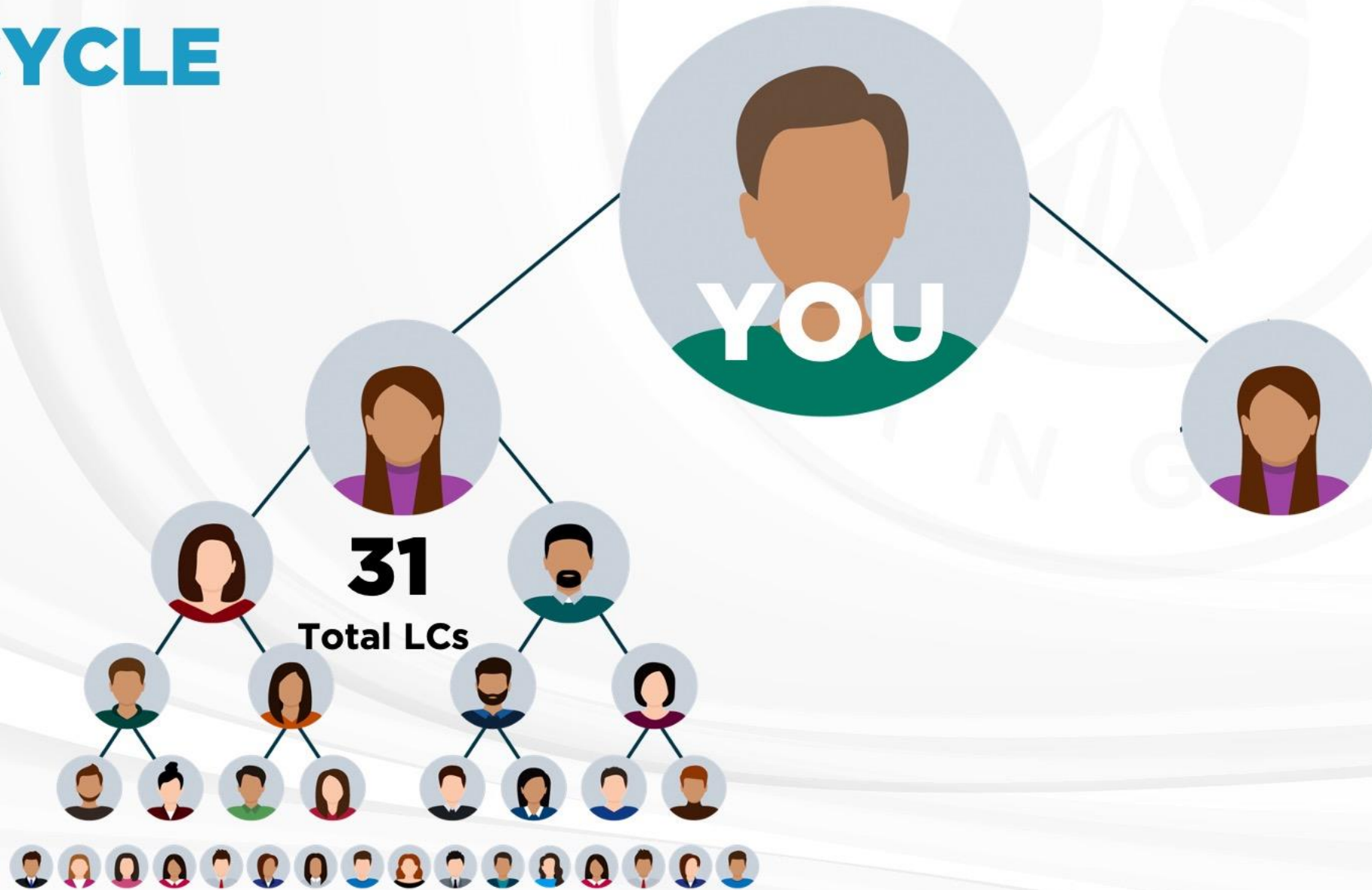
3RD CYCLE



4TH CYCLE



5TH CYCLE



25X ROAD TO DIRECTOR | DUPLICATING 10-5-2

31 LCS ON EACH SIDE OF YOUR BUSINESS ALL WORKING TOWARD

10

(80 CV)

5

(50 CV)

2

(20 CV)

= 150 CV

10-5-2 Activity creates 150 CV x 31 = 4650 CV
Personal 40 CV Purchase x 31 = 1240 CV

**Total of
5890 CV**

→ You Reach
Director Rank

